

Economic Development and Tribal Nations



Errin Clocker
Executive Director
Grand Gateway EDA

A LITTLE BIT ABOUT ME

GGEDA for 26 years

BSBA in Business Administration from RSU

Dual Enrollment in Cherokee Nation and Delaware Tribe

Married with two children

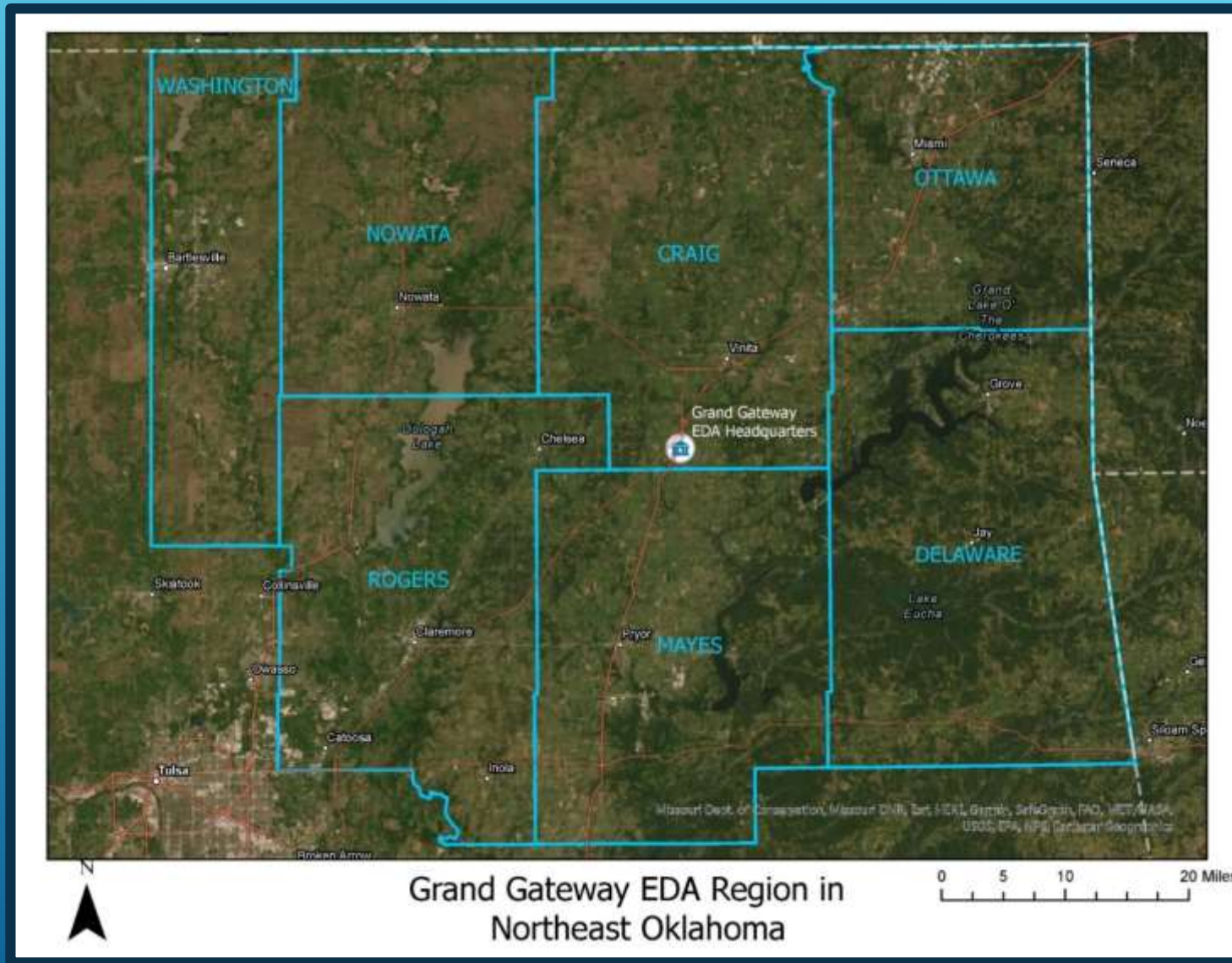
2019 Emerging Leaders Training Program Graduate

Executive Director of GGEDA – February 1, 2023

Love to travel, read, OU FOOTBALL and entertain friends and family in the backyard bar!!



GRAND GATEWAY EDA SERVICE AREA



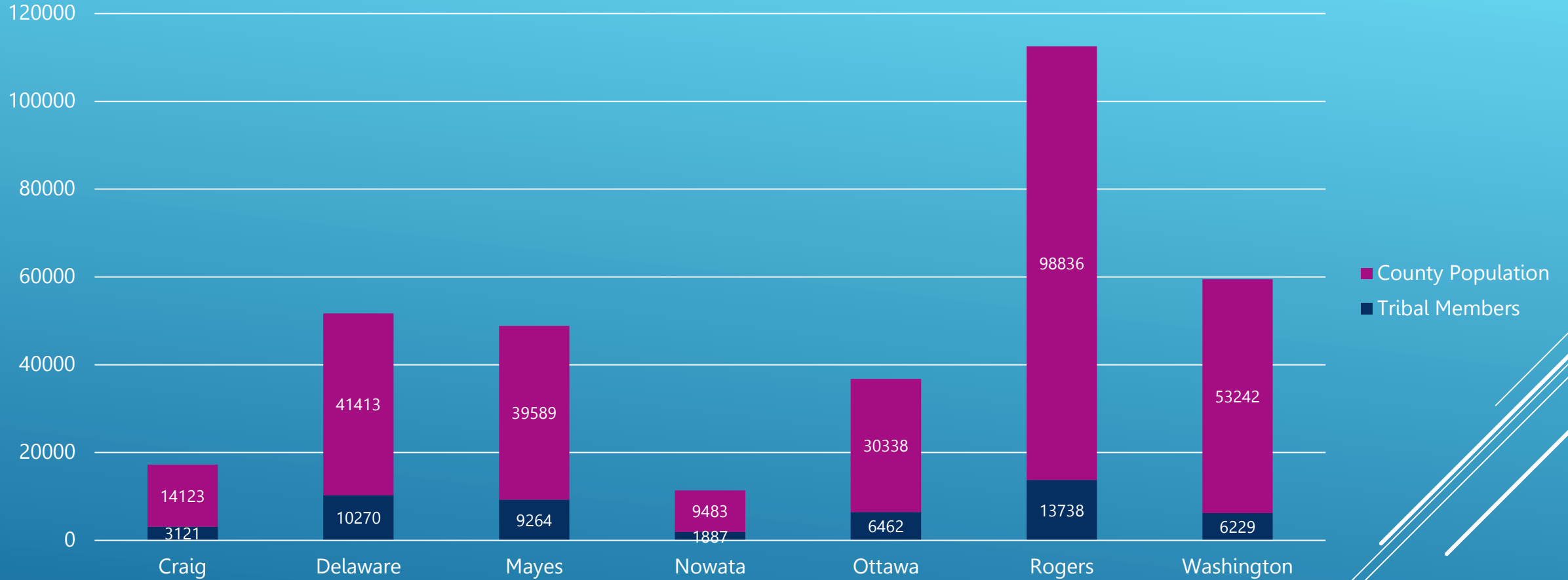
Grand Gateway EDA Region in
Northeast Oklahoma

TRIBES IN GRAND GATEWAY EDA'S SERVICE AREA

- ▶ Cherokee Nation
- ▶ Delaware Tribe of Indians
- ▶ Shawnee Tribe
- ▶ Eastern Shawnee Tribe of Indians
- ▶ Miami Tribe of Oklahoma
- ▶ Modoc Tribe of Oklahoma
- ▶ Ottawa Tribe of Oklahoma
- ▶ Peoria Tribe of Indians of Oklahoma
- ▶ Quapaw Tribe of Indians
- ▶ Seneca Cayuga Tribe of Oklahoma
- ▶ Wyandotte Nation




Tribal Population by County



TOTAL SERVICE AREA 287,024
APPROXIMATELY 20% TRIBAL

ENCOURAGING TRIBAL INVESTMENT

- ▶ Demonstrating the value of the EDD to the region/tribal citizens
 - ▶ Developing trust and rapport
 - ▶ Invite tribal leaders to take part of decision making process
 - ▶ Leads to collaborative opportunities
- 

TRIBAL PRESENCE IN DECISIONS

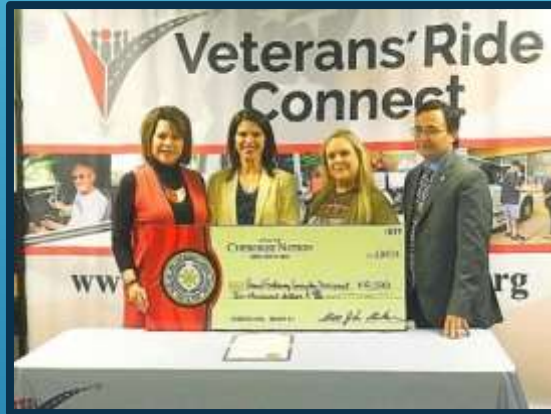
- ▶ Grand Gateway Board of Directors
- ▶ Grand Gateway CEDS Committee
- ▶ Grand Gateway Area Agency on Aging Advisory Council
- ▶ Northeast Oklahoma Rural Transportation Planning Organization
- ▶ Grand Gateway Community Development Foundation
- ▶ Grand Gateway Caregiver Coalition



TRANSIT TRIBAL PARTNERSHIPS

Cherokee Nation

- *Contract provider for seven counties
- *Support to other transit programs
- *Creating new service in communities of Nowata and Jay
- *Implementing on-demand technology



NE Tribal Transit Consortium

- *Nine Tribes
- *Ottawa and Delaware Counties
- *\$337,000 grant for on-demand technology
- *Support other transit programs

14 tribal vehicles complete an average 25,000 trips per year

AREA AGENCY ON AGING TRIBAL PARTNERSHIPS



Caregiver Coalition

Caregiver Conference

Senior Health Fairs, Proms, Picnics

Car Bingo



COMMUNITY AND ECONOMIC DEVELOPMENT TRIBAL PARTNERSHIPS

- Wilma P Mankiller and Charlie Soap Water Act
- Ensures \$2 million Cherokee Nation investment each year
- Eliminate barriers to clean water for all tribal citizens
- Created need for comprehensive infrastructure analysis
- Cherokee Nation - GGEDA GIS Contract

COMMUNITY AND ECONOMIC DEVELOPMENT TRIBAL PARTNERSHIPS

- ▶ Regional Water District Creation with Cherokee Nation
- ▶ Administration of American Rescue Plan Act Funds
 - ▶ Miami Tribe of Oklahoma
 - \$2M Ottawa County Jail Remodel
 - \$1.7M Ottawa County Rural Water District #7
 - ▶ Various Communities and Rural Water Districts in the Cherokee Nation Reservation Boundaries



Thank you

eclocker@grandgateway.org