

CREATIVE COLLABORATIONS REGIONAL RESILIENCE PARTNERSHIP

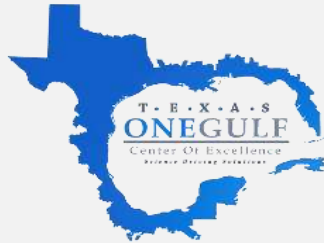
PRESENTATION TO SWREDA

MAY 4, 2023

EMILY MARTINEZ

DIRECTOR OF REGIONAL ECONOMIC DEVELOPMENT

HOW IT ALL BEGAN





KEY LESSON: RESILIENCE IS LOCAL

STRENGTHENED CAPACITY IS NEEDED FROM THE LOCAL TO REGIONAL LEVEL!

DISASTER RECOVERY & RESILIENCE

Analysis one year after the storm showed the Coastal Bend did not have the capacity needed to effectively pursue recovery & mitigation

- HRI, in partnership with FEMA, organized a Grants Training Workshop open to local officials, small businesses and NGOs
- Attended by over 50 local stakeholders, as well as program officials from FEMA, TDEM, SBA, GLO, TWDB, EPA, USDA, EDA and the Rebuild Texas Fund
- Discussion centered on unmet needs and strengthening understanding of available recovery programs and funds



REGIONAL RESILIENCE MODELS

Collaborative	Membership [†]				Administrative or Fiscal Host	Funding Source(s) [‡]				
	Local government	Public agencies & utilities*	Nonprofit, Academia	Business/Private		Member dues/Cost-share	Philanthropic grants	State or federal grants	Other	In-kind services
<i>King County-Cities Climate Collaboration (K4C)</i>	✓	✗	✗	✗	County	✓				✓
<i>Capital Region Climate Readiness Collaborative (CRC)</i>	✓	✓	✓	✓	Nonprofit – Local Government Commission	✓			✓	✓
<i>Sierra Climate Adaptation & Mitigation Partnership (Sierra CAMP)</i>	✓	✓	✓	✓	Nonprofit – Sierra Business Council	~	✓		✓	✓
<i>Los Angeles Regional Collaborative for Climate Action and Sustainability (LARC)</i>	✓	✓	✓	✓	University – UCLA	✓		✓		✓
<i>San Diego Regional Climate Collaborative (SDRCC)</i>	✓	✓	✓		University – USD	~	✓	✓	✓	✓
<i>Southeast Florida Regional Climate Change Compact (Compact)</i>	✓	✗	✗	✗	Nonprofit – Institute for Sustainable Communities; County – Broward (fiscal)	✓	✓	✓		✓

[†]Note on Membership: “✗” indicates entities/organization types that are not eligible at all for membership in the collaborative, while blank spaces indicate member types that are eligible but so far the collaborative does not have any from that category.

[‡]Note on Funding Sources: blank spaces indicate funding sources not used to date, while tildes (~) indicate mixed or optional dues structures (i.e., SDRCC, which does not charge dues to public agency members, and Sierra CAMP, which has a voluntary/suggested contribution structure).

*Other public agencies include regional authorities like water and air districts, councils of government, port authorities, etc.

Utilities (e.g., electric) are included in this category regardless of ownership.

RRP INITIATED

2019 COASTAL BEND HURRICANE CONFERENCE



REGIONAL RESILIENCE PARTNERSHIP COASTAL BEND OF TEXAS

MEMORANDUM OF UNDERSTANDING
ESTABLISHING A JOINT PROJECT BETWEEN
TEXAS A&M UNIVERSITY-CORPUS CHRISTI
AND
COASTAL BEND COUNCIL OF GOVERNMENTS
Agreement No. 1

I. PARTIES

This Memorandum of Understanding ("Agreement") is entered into by Texas A&M University-Corpus Christi ("TAMUCC"), represented herein by Dr. Kelly Quintanilla in her capacity of President, and the Coastal Bend Council of Governments (CBCOG), represented herein by Mr. John Buckner, in his capacity of Executive Director, with the purpose of setting forth the general framework for specific projects in the future in matters related with: Disaster Resilience and Mitigation of the Texas Coastal Bend and Investigation and the Disclosure thereof, subject to the following considerations, recitals and clauses:

RECITALS

II. TAMUCC HEREBY DECLARES THROUGH ITS AGENT:

- (1) That it is a university managed by a Board of Regents of The Texas A&M University System (the "A&M System"), and that it has legal capacity to engage in, and be engaged under the terms of the policies of the A&M System and the laws of the State of Texas.
- (2) That its purpose is supporting investigation and education activities as well as the disclosure thereof, which includes long term development in the sustainable use and preservation of the Gulf of Mexico and resilience building of Gulf coastal communities, specifically through the Harte Research Institute for Gulf of Mexico Studies.
- (3) That the TAMUCC President has the legal capacity to execute this Agreement and additional agreements with other institutions according to the laws of the State of Texas and the policies of the A&M System.
- (4) That its legal domicile is located at Texas A&M University Corpus Christi, 6100 Ocean Drive, Corpus Christi, Texas 78412, United States of America, telephone +1(361) 825-2000.



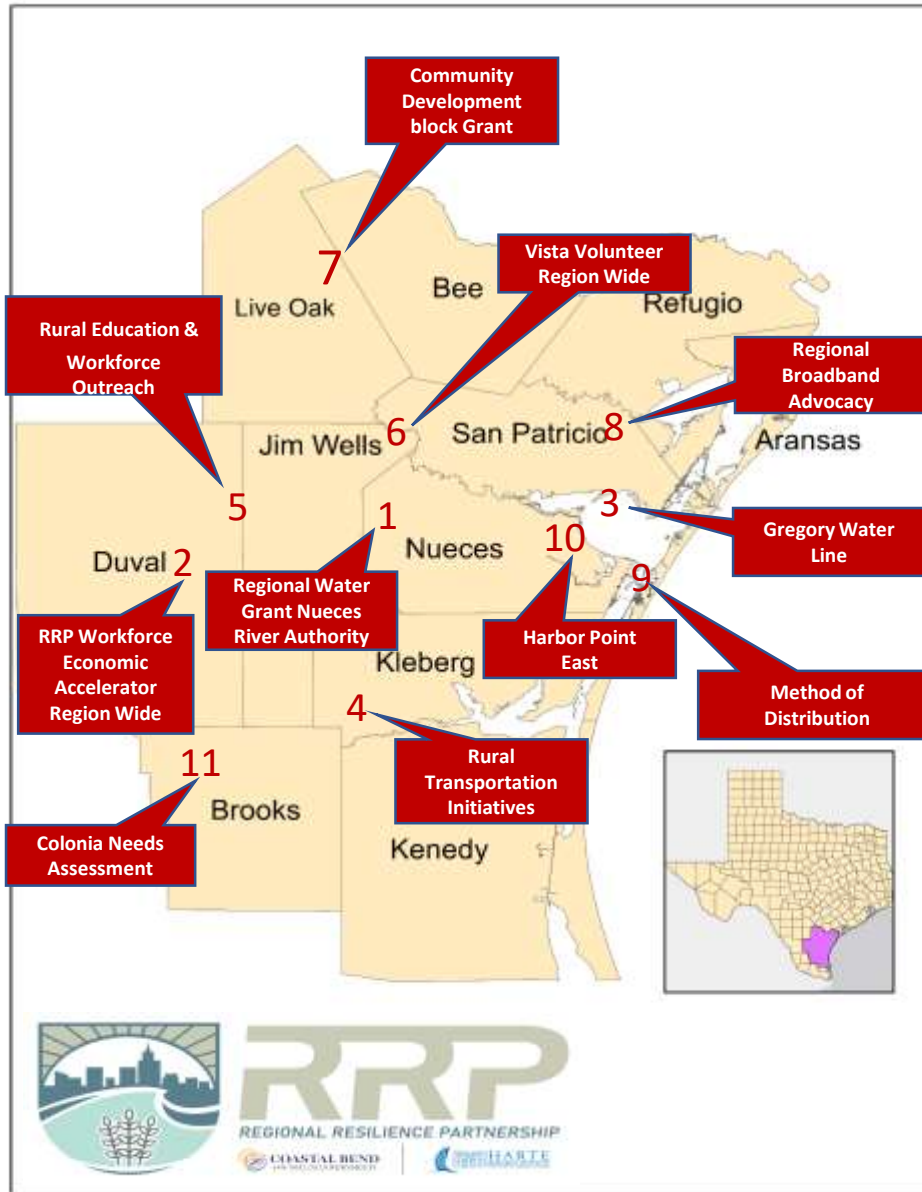
PEOPLE OF RRP

Stakeholders: RRP primarily serves communities in the Texas Coastal Bend region. Examples include:

- Local government
- Chambers of Commerce
- Economic Development Corporations
- Workforce
- Independent School Districts
- Non-profit organizations
- Civic organizations
- Churches
- Public health entities
- Industry partners
- Higher Education
- State agencies and federal partners



2022 ECONOMIC DEVELOPMENT INITIATIVES



- 1 Regional Water Grant for Nueces River Authority** **\$900,000**
 CBCOG procured a competitive grant for Nueces River Authority from the General Land Office in the amount of \$900,000 for replacing aging wastewater equipment and for a regional wastewater feasibility study.
- 2 RRP Workforce and Economic Development Accelerator** **\$1,000,000**
 The EDA awarded CBCOG a \$1,000,000 American Rescue Plan Award in partnership with TAMUCC and UTSA to assist Rural Coastal Bend Communities in developing and implementing resiliency plans to increase economic opportunities for the region.
- 3 Gregory Water Line** **\$2,504,000**
 CBCOG procured an American Rescue Plan Award on behalf of the City of Gregory for needed improvements to the City's water infrastructure.
- 4 Rural Transportation Initiatives** **\$35,000**
 CBCOG secured a contract with TxDOT to serve as the Lead Agency for public transportation planning particularly in the underserved rural areas.
- 5 Rural Education and Workforce Outreach** **\$50,000**
 In order to improve access to higher education for rural communities, E2E Partners contracted with CBCOG to handle outreach in the rural communities. As a result of this work, E2E was able to secure an additional \$45,000 to provide technical training in rural communities.
- 6 Regional Water Grant Nueces River Authority** **\$37,500**
VISTA Volunteer
 CBCOG was selected to host a VISTA volunteer to help build economic development resilience Coastal Bend – specifically in rural, economically distressed communities - through gathering of data, planning and community outreach. The position has a market value of \$37,500 plus benefits.
- 7 Community Development Block Grant Technical Assistance** **\$10,244**
 Texas Department of Agriculture awarded CBCOG a contract in the amount of \$10,244 to provide technical assistance to CBCOG communities on how to apply for CDBG funding.
- 8 Regional Broadband Advocacy** **\$TBD**
 Broadband access continues to be a key infrastructure need in South Texas. Representative Todd Hunter appointed CBCOG to the State Broadband Committee. CBCOG also participates on the Brush County Broadband Task Force.
- 9 Method of Distribution** **\$90,000**
 While not competitively funded, the Texas General Land Office contracted with CBCOG to do a Method of Distribution for approximately \$180 Million for mitigation projects prepare for future disasters. CBCOG worked with partners at Texas A&M Corpus Christi to determine data based factors to determine allocation.
- 10 Harbor Point East** **\$4,488,000**
 CBCOG self-allocated 3% of the MIT funding to do a regional project. The Harbor Point East Project, in partnership with the Port of Corpus Christi, will provide a nature based stormwater solution that creates an ideal urban neighbor space for the entire community.
- 11 Colonia Needs Assessment** **\$700,000**
 CBCOG assisted Texas Department of Agriculture to coordinate with Brooks County to administer the Colonia Needs Assessment for the 11 County region. CBCOG will provide tech support

COMPREHENSIVE ECONOMIC DEVELOPMENT STRATEGY



- CEDS is a strategy-driven plan for regional economic development, and is a prerequisite for designation by EDA as an Economic Development District (EDD)
- Driven by the CEDS Committee, the strategy is the result of a regionally-owned planning process designed to build capacity and guide the economic prosperity and resiliency of a region
- Must be updated every 5 yrs
- RRP was able to expand the stakeholder base needed to more meaningfully update the Coastal Bend CEDS for 2021-2026

BUILD PARTNERSHIPS & ENGAGE NETWORKS → ADVANCE SCIENCE & UNDERSTANDING → BRIDGE KNOWLEDGE TO ACTION

RRP STRATEGIC PLAN

Vision

Coastal Bend and partner communities are resilient to natural and manmade disaster events and environmental change and are leaders in innovative strategies to mitigate disaster risk.

Mission

RRP brings a holistic approach to community resilience and capacity building, creating a foundation for robust economies, infrastructure, and ecosystems as well as strong and healthy social systems.

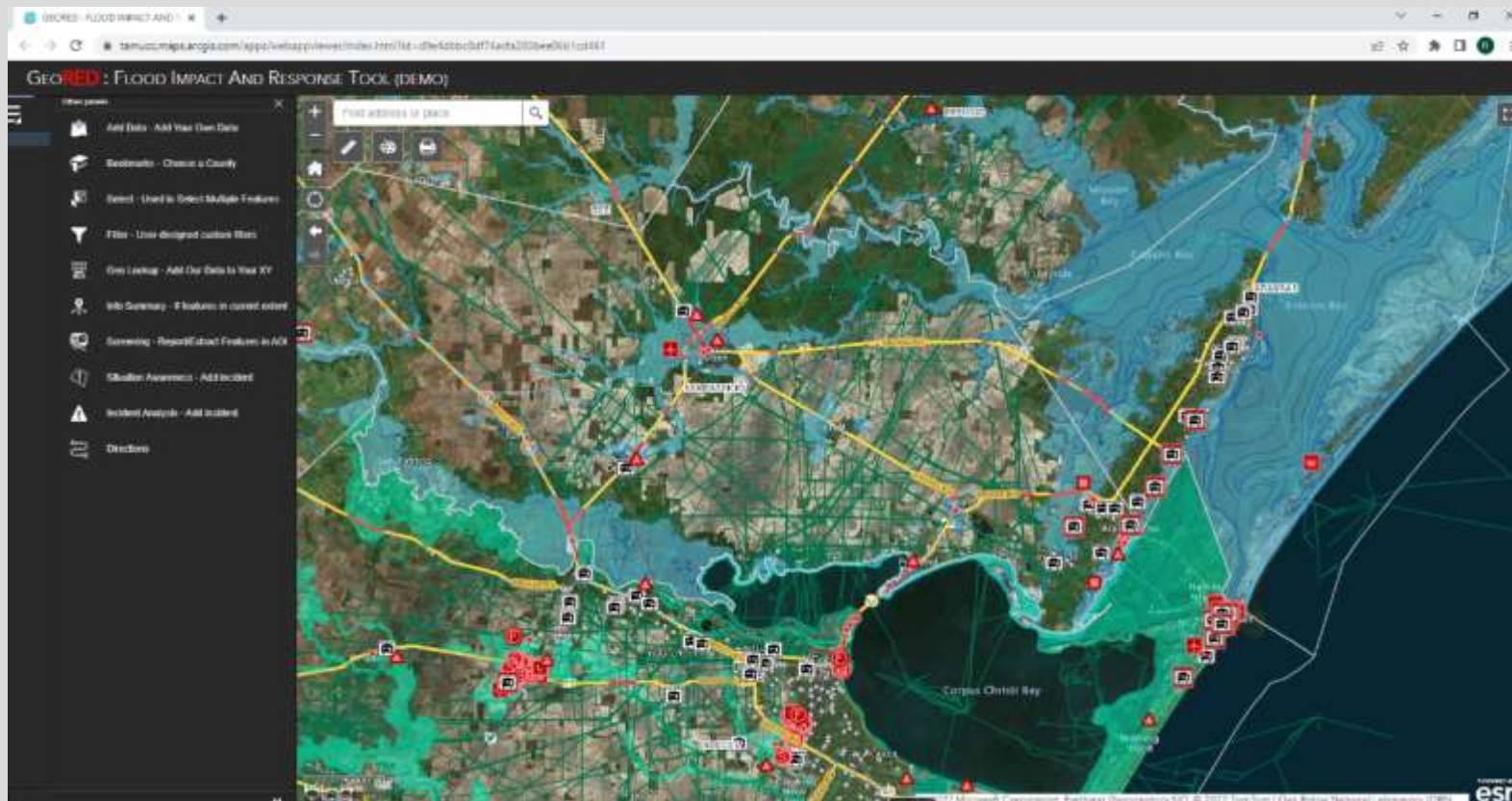
Relationships	Goal 1: Establish consistent, two-way communication with communities
Local Data for Local Resilience	Goal 2: Understand and define resilience at the local level with local data
Needs Assessment	Goal 3: Conduct a needs assessment in each Coastal Bend County
Strategies for Resilience	Goal 4: Create, implement and inform data-driven strategies for resilient decision-making
Capacity Building	Goal 5: Build local capacity to strengthen resilience, mitigate risk and measure outcomes

RRP PROJECTS: GEOSPATIAL RESILIENT ECONOMIC DEVELOPMENT (GEORED)



Advancing ~\$1.5M project to build the South Texas Platform for Resilient Economic Development in seven Coastal Bend Counties to:

- Provide a common online platform to assess environmental and economic risk in a geospatial framework



INTERNATIONALLY RECOGNIZED EXPERTISE



OPEN ACCESS

EDITED BY
Lucia Velotti,
John Jay College of Criminal Justice,
United States

REVIEWED BY
Annelie Sjölander Lindqvist,
University of Gothenburg, Sweden

*CORRESPONDENCE
Kateryna Wowk

Translating the complexity of disaster resilience with local leaders

Kateryna Wowk^{1*}, Margaret Adams² and Emily Martinez³

¹Harte Research Institute for Gulf of Mexico Studies, Texas A&M University-Corpus Christi, Corpus Christi, TX, United States, ²Texas General Land Office, Austin, TX, United States, ³Coastal Bend Council of Governments, Corpus Christi, TX, United States

FORMAL PARTNERSHIPS



NOTES & REFERENCES



Facebook



Instagram



LinkedIn

@CoastalBend.RRP

[http://journal.frontiersin.org/article/10.3389/fcomm.2023.1100265/full?utm_source=Email to authors &utm_medium=Email&utm_content=T1 11.5e1 author&utm_campaign=Email publication&field=&journalName=Frontiers in Communication&id=1100265](http://journal.frontiersin.org/article/10.3389/fcomm.2023.1100265/full?utm_source=Email%20to%20authors&utm_medium=Email&utm_content=T1_11.5e1_author&utm_campaign=Email_publication&field=&journalName=Frontiers%20in%20Communication&id=1100265)

GeoRED Project: <https://geored.org/>

EDA **funded the initial phase with focus on: Aransas, Bee, Refugio, San Patricio**

TCEQ / Texas OneGulf provided additional support for Nueces, Kleberg and Kenedy Counties

Emily Martinez

emily@coastalbendcog.org