

TRAM

Tulsa Regional Advanced Mobility

Tulsa's Advanced Mobility Cluster wins Major Federal Grant from U.S. Department of Commerce

~\$39 million federal award and ~\$30 million local match will fund a multi-functional suite of projects to catalyze Tulsa's growth as an advanced mobility hub.



Our vision is to transform Tulsa into a globally-competitive hub for Advanced Mobility

Creating an Innovation Pipeline

Tier-1 research center and 114 nautical mile commercial-scale beyond visual line of site (BVLOS) testing corridor

Building a Community

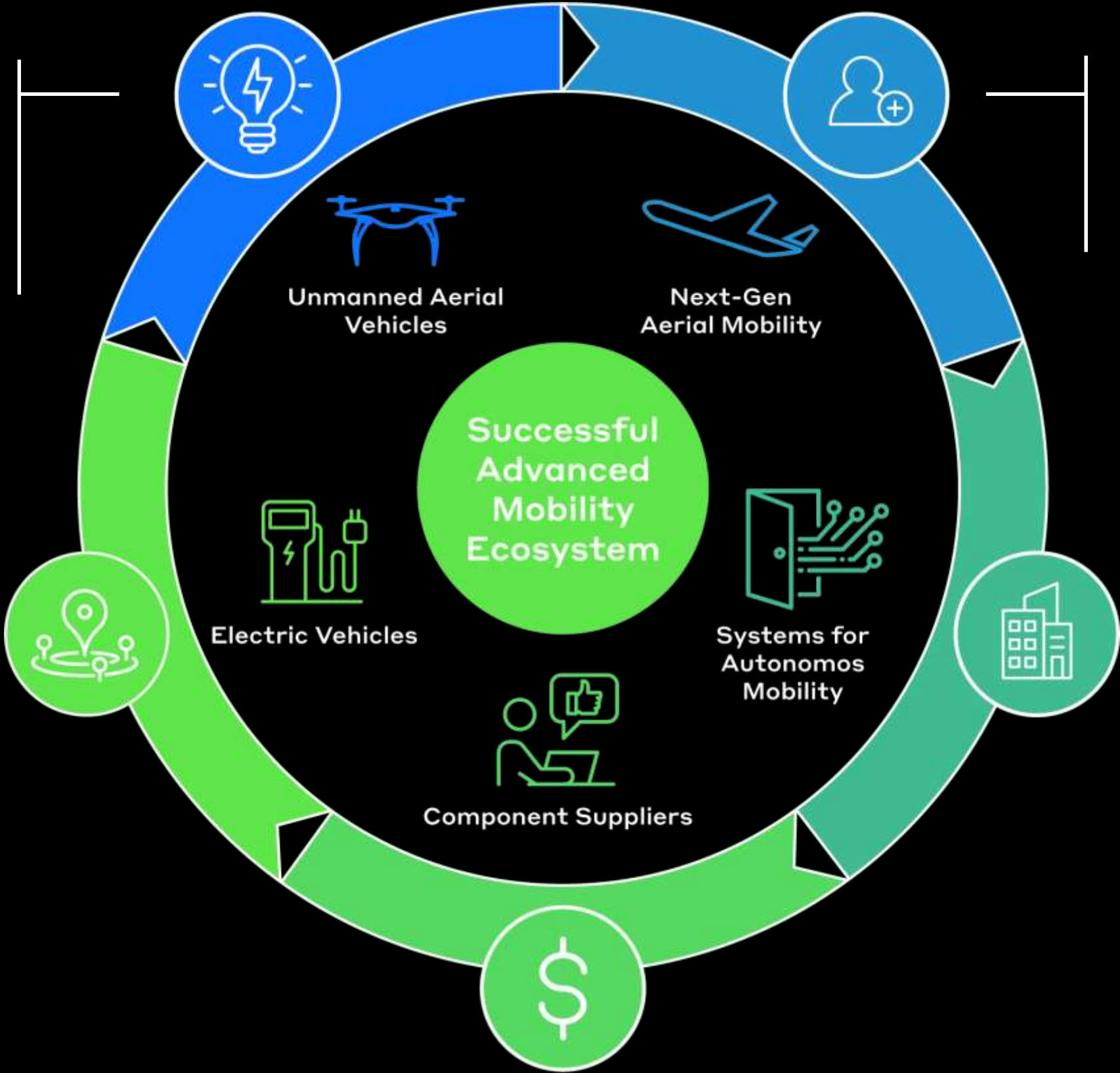
Thriving ecosystem of industry and academic partners across advanced ground and air mobility

Developing & Attracting Workforce

Targeted training programs to build the talent pipeline for Advanced Mobility

Engaging & Attracting Employers

Infrastructure for large shovel-ready industrial sites for Advanced Mobility players to expand and grow



Attracting Capital to Support Innovation Companies

Supporting entrepreneurs and innovators to launch and scale new companies

Our multi-faceted coalition aims to leverage Tulsa's unique assets to engage partners in Advanced Mobility

Tulsa AM Cluster Offers a Variety of Ways to **Be Involved**

FLIGHT CORRIDOR

Beyond Visual Line of Sight (BVLOS) Testing Facilities

- 114 nautical mile flight corridor, ~5 miles from downtown Tulsa and Tulsa International Airport
- Possibility to co-locate manufacturing, storage, & MRO facilities adjacent to corridor

Ways to Be Involved

- Testing BVLOS technologies and/or establishing research partnerships
- Establishing manufacturing, storage, and/or MRO centers

LAUNCHPAD RESEARCH CENTER

Advanced Mobility Research Incubator

- World-class research that focuses on the highest priority Advanced Mobility topics, as defined by an industry consortium
- Ecosystem of research facilities, entrepreneurial support programs, students, faculty, and community convenings

Ways to Be Involved/Support

- Joining LaunchPad Industry Consortium as a consortium member
- Sponsoring research
- Mentoring startups and fellows

CERTIFICATION & TRAINING PROGRAMS

Regional Training for Advanced Mobility Jobs

- Workforce development programs aligned to industry needs and focused on building pathways for diverse tech talent
- Reskilling and upskilling programs, curricula design for Advanced Mobility careers, bolstering of undergraduate programs, and K-12 outreach

Ways to Be Involved/Support

- Offering training and career opportunities to enrolled students
- Advising on syllabus creation

INDUSTRIAL PARK EXPANSION

Pad-Ready Industrial Space for Advanced Mobility Companies

- Shovel-ready industrial sites across ~3,000 acres for Advanced Mobility manufacturing
- Key locations in close proximity to strategic suppliers

Ways to Be Involved/Support

- Expand manufacturing operations to new sites

Data-Driven Workforce Programs Will Fuel Company Growth

Coordinating and reorienting local training pathways to address the needs of advanced mobility employers
 Labor Market Observatory process creates responsive, scalable training programs to meet the needs of advanced mobility employers, including:

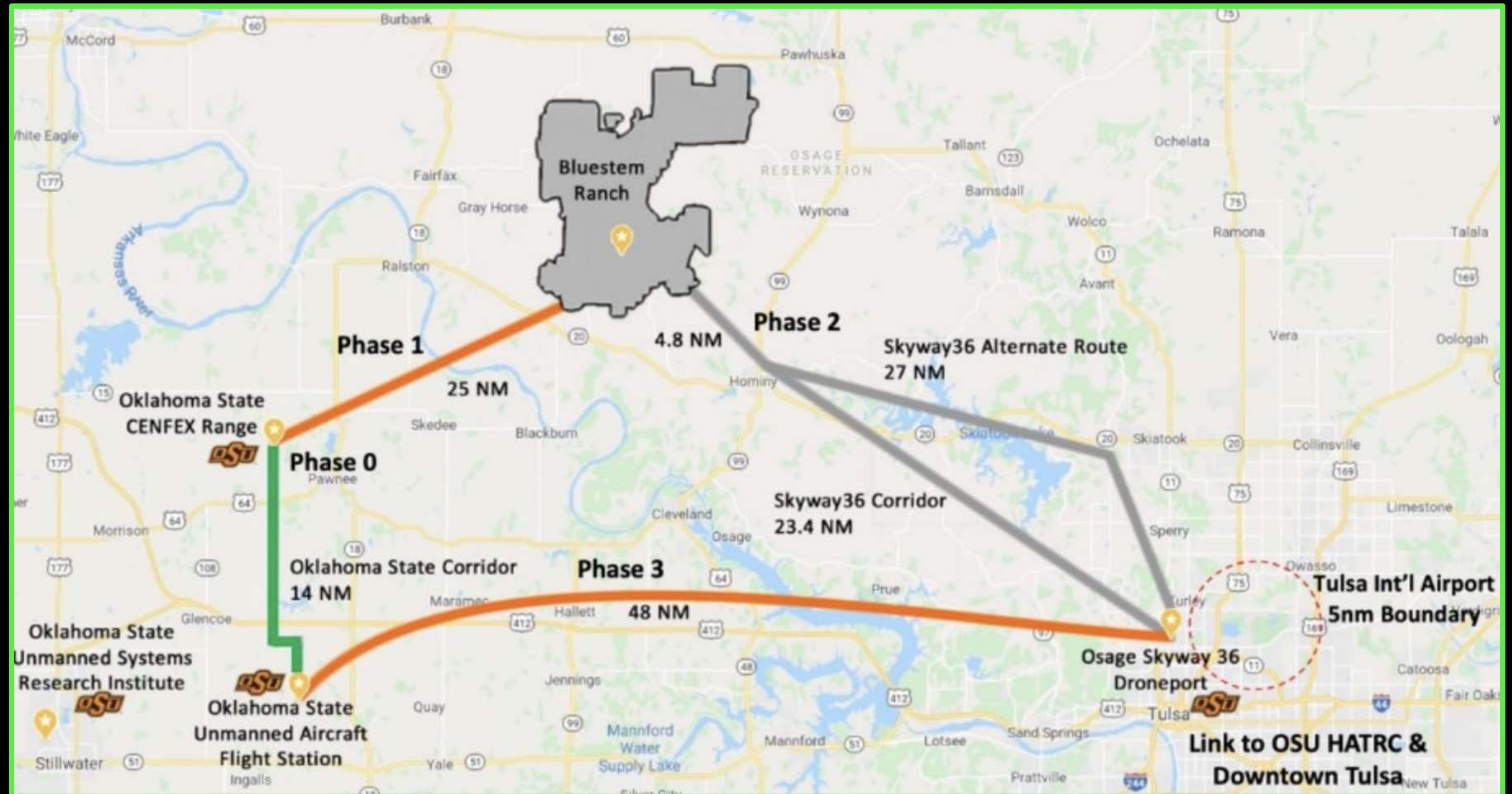
PROGRAMS	SKILLS	SCALE*
Advanced Manufacturing Apprenticeships	ADAS technicians, electronic/electromechanical assemblers, and mechanical assemblers	~150-200/year
Certification Programs	Software engineering, electrical technicians, aerospace drafting (CATIA), MRO	~100-150/year
Bachelor of Science Degrees in Computer & Mechanical Engineering	Curriculum focused on embedded systems	~25-40/year

*Numbers based on current funding levels; all programs are designed to be rapidly scalable depending on national trends and local industry needs

Tulsa's BVLOS Corridor will be the Nation's Premier Testing Site

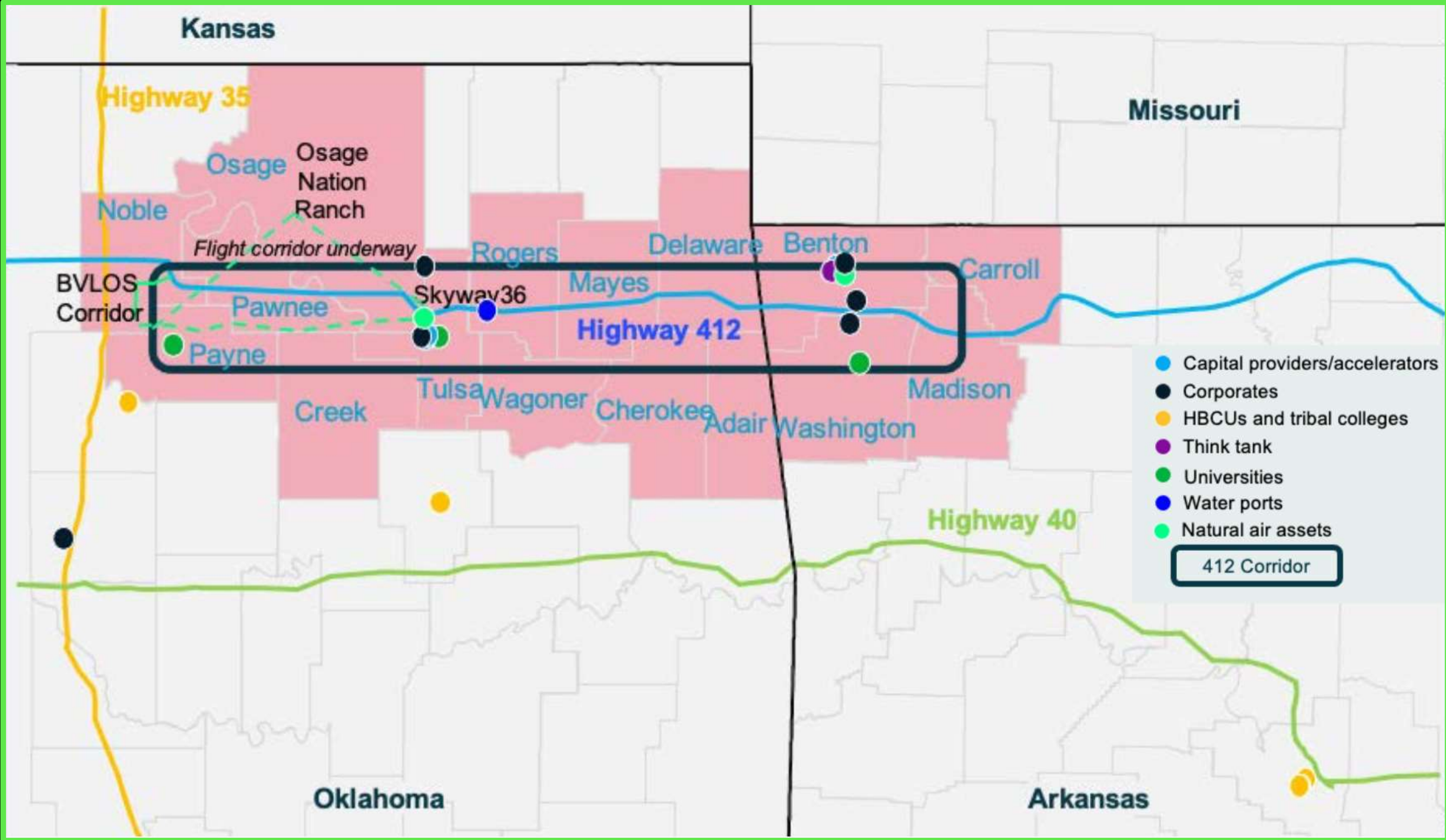
Unique length, flexibility, and proximity to urban core will offer unparalleled conditions & convenience.

OSAGE LLC



Looking Ahead: Expanding Regional Collaboration

Leveraging nationally-distinct geographic assets, partners, and industry leaders to drive regional expertise in advanced mobility.



Thank you!

Jennifer Hankins
Chief of Strategic Partnerships,
RECO

Jennifer@TulsaInnovationLabs.com

www.linkedin.com/JenniferHankins
10



TRAM