



## National Broadband Availability Map

**The National Telecommunications and Information Administration (NTIA)**

**SWREDA 2019**

**Leveraging Local Assets, Building Regional Economies**  
**The Importance of Broadband to Economic Development**

**Justin D. Fazzari, Ph.D.**

**December 5, 2019**

# The National Telecommunications and Information Administration (NTIA) advises on telecom policy issues

- Expanding broadband access and adoption
  - National Broadband Availability Map (NBAM)
  - BroadbandUSA Technical Assistance to Communities
- Ensuring that the Internet remains an engine for continued innovation and economic growth



# Why is Broadband Important to Economic Development?

## America has a *persistent* digital divide



**10% of all Americans** (34 million people) and **39% of rural Americans** (23 million people) lack access to broadband speeds



Approximately **21 million children** do not have the bandwidth needed for digital learning



**34% of non-metro healthcare facilities** lack sufficient broadband connectivity for electronic medical records and information exchange



**42% percent of public libraries** have 10 Mbps or slower connections

## Broadband access and use are *critical to healthy communities*



Up to \$600 Per Student Saved Annually Using Digital Resources



Hospital Admissions by 35%



Hospital Stay by 59%



Home Value by 3.1%

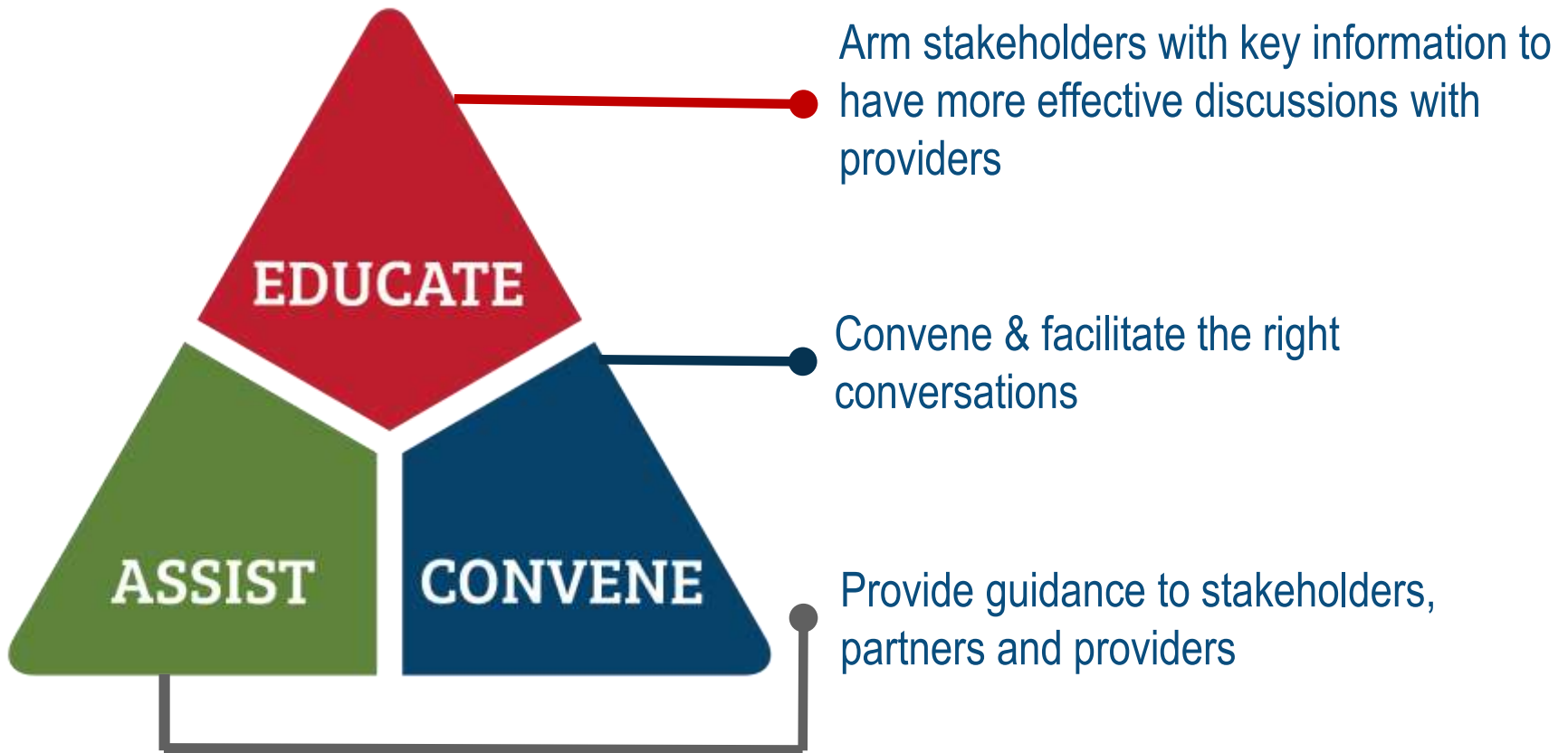


79% of Unemployed Americans Search for Jobs Online



Annual Median Business Revenue by \$300,000

# NTIA's BroadbandUSA program educates stakeholders, facilitates relationships, and provides helpful resources



# National Broadband Availability Map: Objectives

66  
That \$7,500,000 shall be to update the national broadband availability map in coordination with the Federal Communications Commission and using partnerships previously developed with the States.

- ✓ Expand understanding of broadband availability
- ✓ Partner with the states and federal agencies
- ✓ Partner with industry
- ✓ Collect and utilize additional existing data sets from States, Federal, Non-Profit and Procurement
- ✓ Do not duplicate efforts of the FCC
- ✓ Inform decision-making and policy-making
- ✓ Bring together data in new and informative ways
- ✓ Serve as a model for cooperative policy-making

# BroadbandUSA – National Broadband Availability Map

*A closed platform for the geospatial analysis of broadband data*

## Background

Multi-year program to update the nation's understanding of broadband availability, accessible by federal and state policymakers.

## Data

Incorporating data collected by the FCC, states, and the private sector that informs broadband policymaking and investment decision-making.

## Pilot

NTIA has partnered with eight states on a pilot that launched September 2019. Additional regions and data planned for 2020 and beyond.

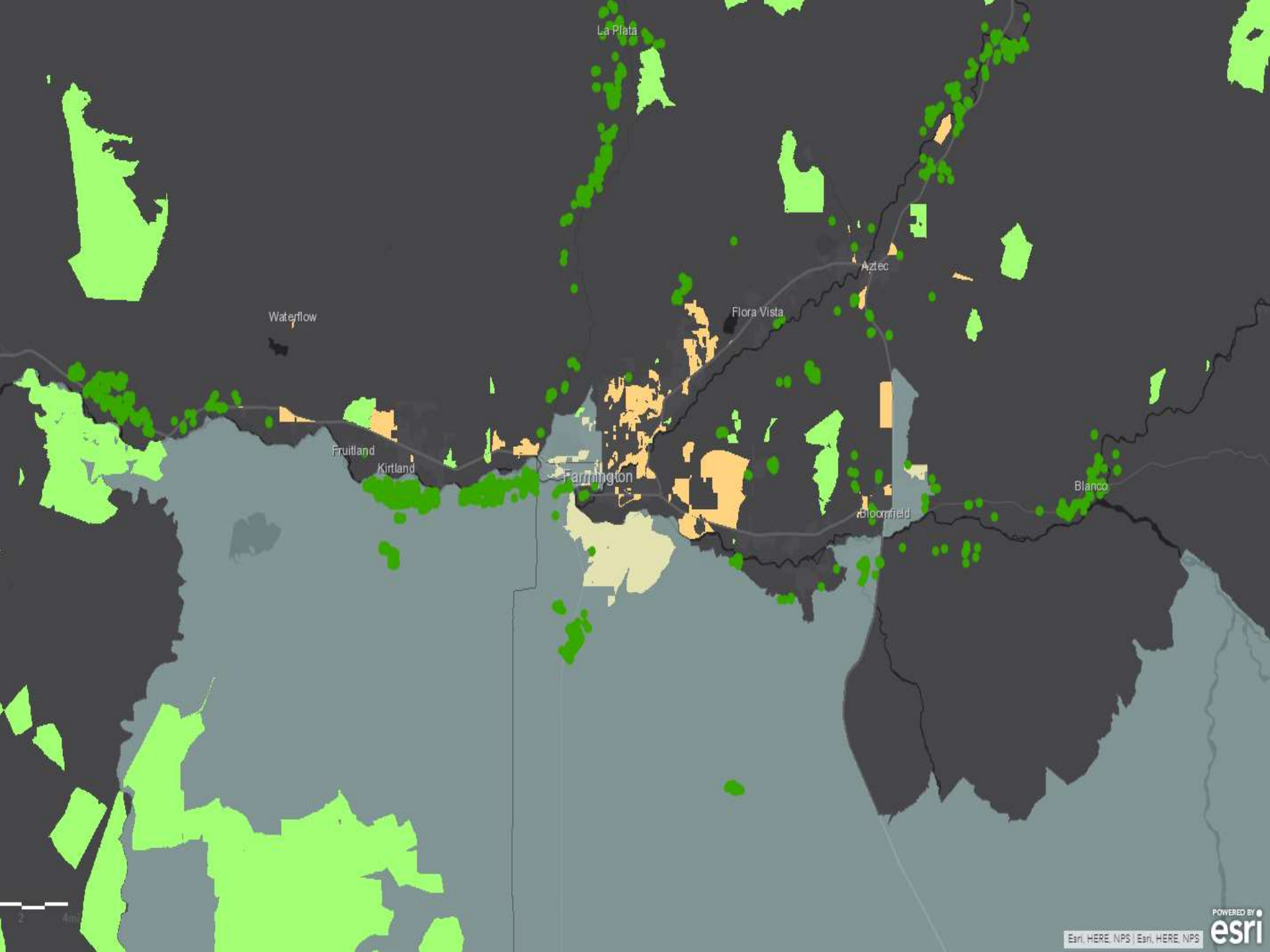




## Expand Understanding of Broadband Availability Inform Decision-Making and Policymaking

- Improve Grant Applications
- Identify Eligible Grant Areas – State and Federal
- Educate Regional and Local Stakeholders
- Improve Planning Processes





La Plata

Aztec

Flora Vista

Waterflow

Fruitland

Kirtland

Farmington

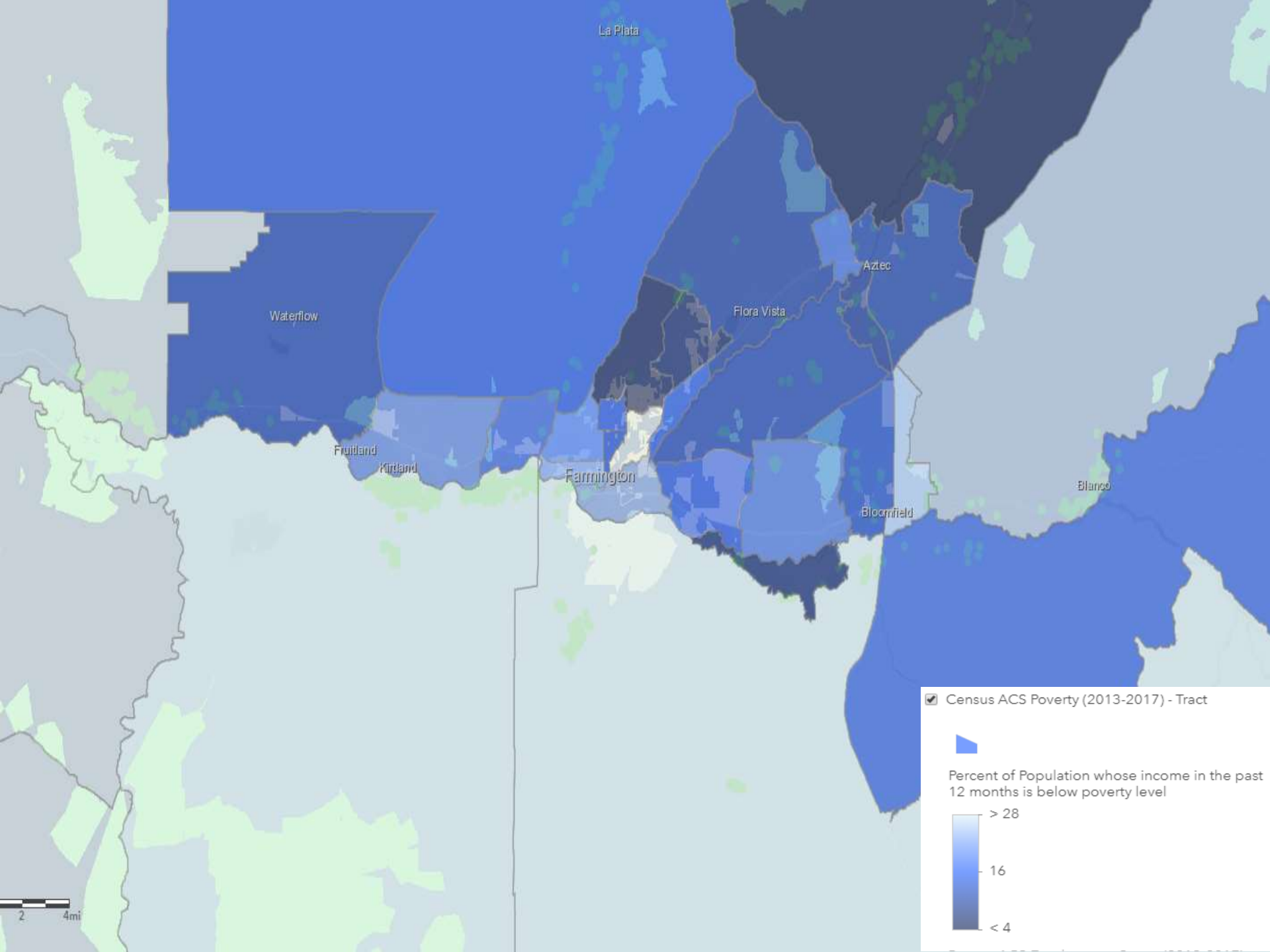
Bloomfield

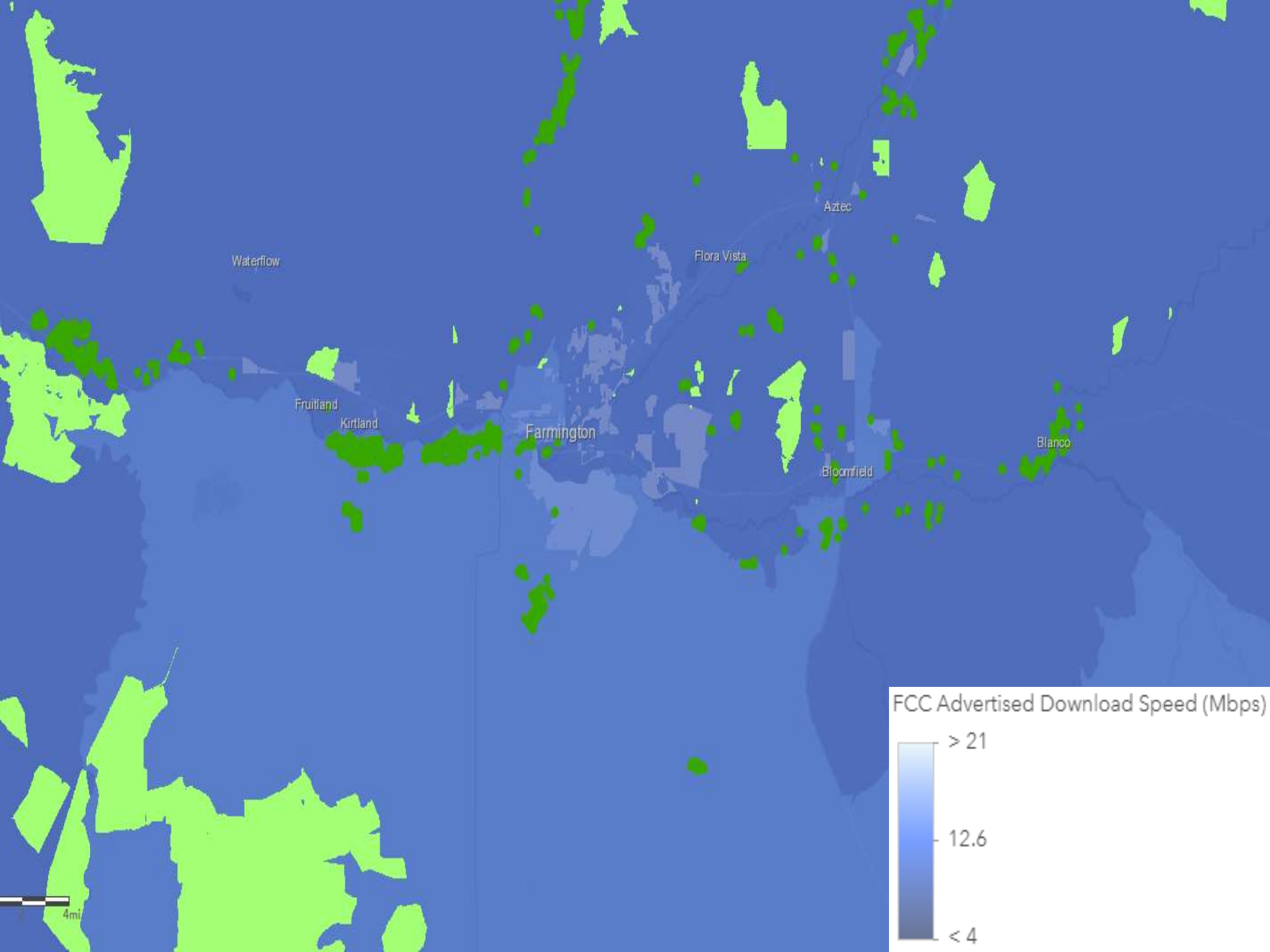
Blanco

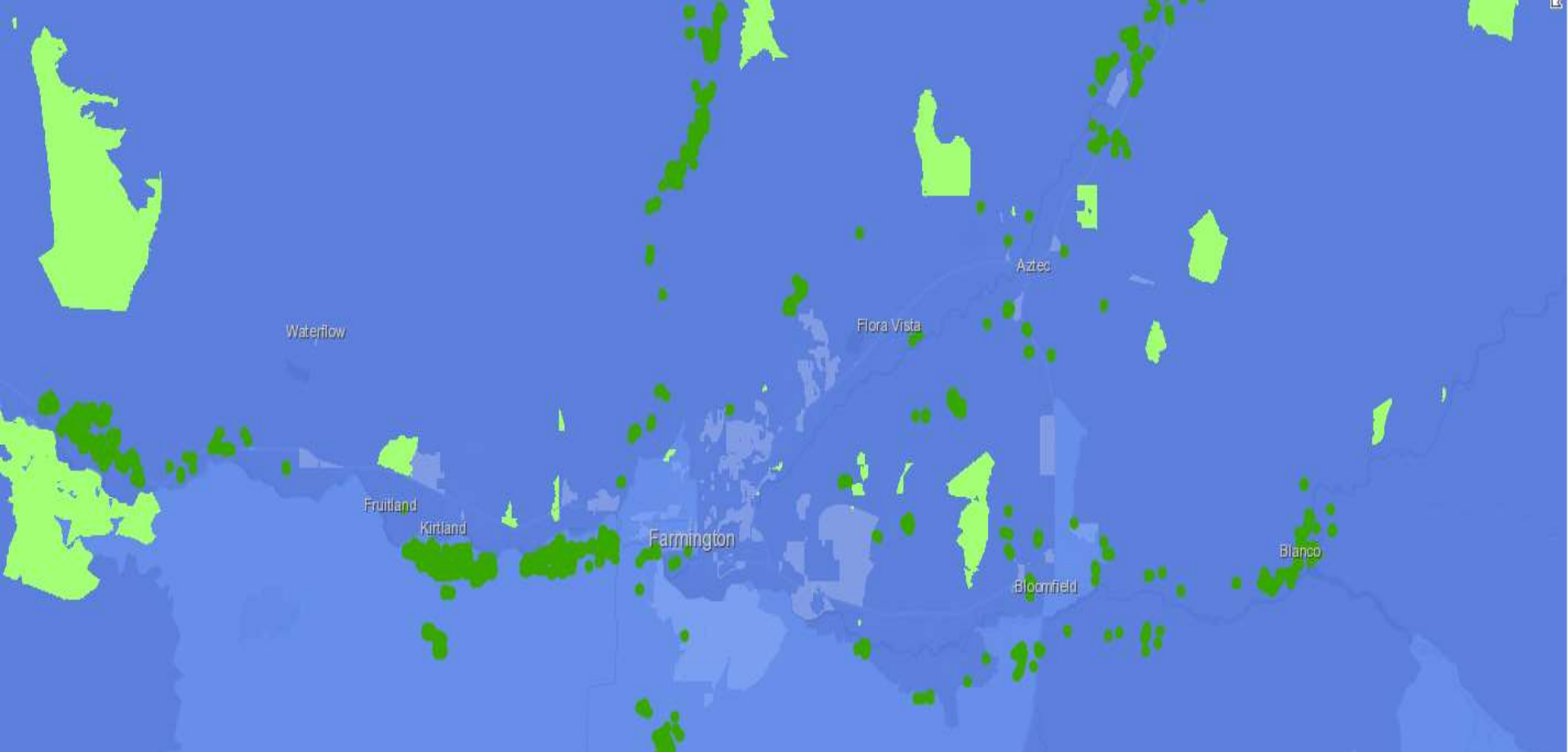
0 2 4mi

POWERED BY  
Esri, HERE, NPS | Esri, HERE, NPS





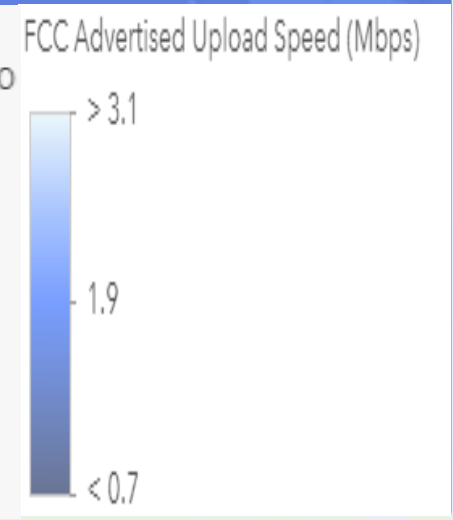




**HUBB\_FCC\_Data: CENTURYLINK, INC.**

Fund Type	CAF II
Study Area Code	495,105
Company Name	CENTURYLINK, INC.
Carrier	QWEST CORP-NM
Latitude	36.72
Longitude	-108.21
Deployment Address	245 W PINON ST
Deployment City	FARMINGTON
Deployment State	NM
Deployment ZIP Code	87,401
Deployment Date	12/30/2016, 5:00 PM
Deployment Year	2,016
Census Block	350,450,001,002,010,00
Locations Obligation	25,308
Locations Deployed	2
Target Build Out	
Download Upload Speed Tier	10 Mbps/1 Mbps
Total State Support Received	10,942,752.00

FCC Providers	13
FCC Advertiser Download Speed (Mbps)	10.00
FCC Advertiser Upload Speed (Mbps)	2.00
M-Lab Unique Download IPs	52
M-Lab Download Test Count	182
M-Lab Median Download Speed (Mbps)	4.28
M-Lab Median Minimum Round Trip Time (ms)	54
M-Lab Unique Upload IPs	81
M-Lab Upload Test Count	349
M-Lab Median Upload Speed (Mbps)	2.92



# Where We've Been... And Where We're Headed

## Launched

### FY19

- ✓ GIS Platform Launch
- ✓ Federal Data
  - ✓ FCC
  - ✓ USAC
  - ✓ Census
  - ✓ USDA
  - ✓ Treasury
- ✓ Commercial Data
  - ✓ Speed Test (M-Lab)
- ✓ 8 State Partners

## Projected (Subject to Change)

### FY20

- GIS Platform
  - Usability Enhancements
  - Investment Decision-Support Features
  - Technical Assistance Integration
- Federal Data
  - FCC 477 Mobile, Subscription
  - DOI, BIA, USPS
- Commercial Data
  - Speed Test (Ookla)
  - Infrastructure Data \*
- NGO Data
  - Education \*
  - Healthcare \*
- Customer Support & Training Program \*
- Business Intelligence Integration \*
- Additional State & Territory Partners
- Initial Federal Partners

### FY21

- GIS Platform
  - Machine Learning \*
  - Automated Analysis \*
- Federal Data
  - BIA
  - GSA
  - Others TBD
- Commercial Data
  - TBD \*
- NGO Data
  - TBD \*
- Additional State & Territory Partners
- Additional Federal Partners
- Tribal Partners

\* Subject to acquisition and / or licensing agreements.

- Arkansas Rural Broadband Solutions Workshop
  - Financing Opportunities to Expand Broadband Access in Rural Communities
    - ❖ December 9<sup>th</sup>, at the Association of Arkansas Counties
    - ❖ 1415 West 3rd St., Little Rock, AR 72201, 10:00 am to 2:30 pm
- NTIA will be holding an afternoon workshop.
  - Broadband Planning and Mapping

Contact: [steve.mosher@usda.gov](mailto:steve.mosher@usda.gov)



## Helping Communities with Broadband Access and Digital Inclusion

### For General Information:



202-482-2048



[broadbandusa@ntia.gov](mailto:broadbandusa@ntia.gov)



<https://broadbandusa.ntia.doc.gov/resources>

### To Request Technical Assistance (TA):



Broadband TA Request Form

<https://broadbandusa.ntia.doc.gov/ntia-common-content/how-we-can-help>

### Resources

- [Implementing a Broadband Network Vision: A Toolkit for Local and Tribal Governments](#)
- [Community Broadband Roadmap Toolkit](#)
- [Guide to Federal Funding of Broadband Projects](#)
- [Using Partnerships to Power Smart Cities](#)